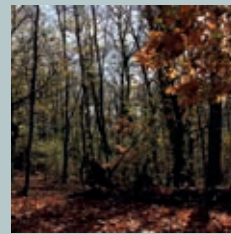


Forest Reserves in the Park

DISCOVER THE FOREST RESERVES OF THE FUTURE LOCARNESE NATIONAL PARK, FROM THEIR NATURAL CHARACTERISTICS, THE FLORA AND FAUNA, TO THEIR HISTORICAL AND CULTURAL ASPECTS, WITH ROBERTO BUFFI. FROM THE MAIA LOW-ALTITUDE WOODLAND, ON THE PARK'S DOORSTEP, TO THE ONSERNONE SILVER FIRS AND THE ARENA MOUNTAIN FOREST, PASSING THROUGH THE GOLDEN CHAIN TREES OF MERGUGNO AND THE BEECH FOREST OF PALAGNEDRA!

Information and booking: Roberto Buffi - 091 745 69 36 - 079 365 93 85
roberto.buffi@silvaforum.ch - www.silvaforum.ch
www.parcnazionale.ch (Forest Reserves)



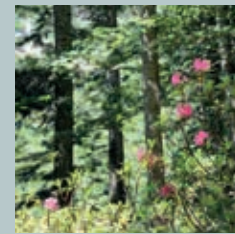
THE MAIA WOODLAND RESERVE

On demand | All year-round
Duration: half- or 1-day

A Maia Woodland excursion, on the hills between Arcegno and Losone, in a forest left to its natural evolution. For many decades, it has evolved spontaneously and, therefore, it makes us understanding its natural dynamics, while appreciating the beauty of a forest where no trees are cut down.

Half-day: 200.- per tour, 1-day: 350.- per tour | Max. nr. of participants: 15

2



THE ONSERNONE RESERVE

On demand from the 1st May to the 31st October
Easy trail: 4h | Difficult trail: 7h

The Onsernone Forest Reserve is one of the largest in Switzerland and one of the most important distribution areas of the silver fir in the alpine arc. The forest, which has not been cut for at least 60 years, offers fascinating images that show what an untouched primary forest looks like.

350.- per tour | Max. nr. of participants: 12

4

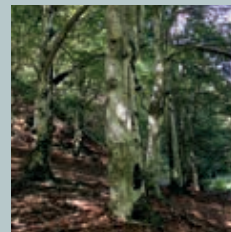
THE MERGUGNO SACRED WOOD RESERVE

On demand | All year-round | Duration: approx. 2h

This excursion will let you discover a forest that is unique in Switzerland. The Sacred Wood Reserve of Mergugno, above Brissago, hosts the alpine golden chain tree, with specimens representing "the old in the forest".

250.- per tour | Max. nr. of participants: 15

1



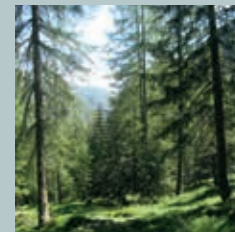
THE PALAGNEDRA RESERVE

On demand from the 1st May to the 31st October
Duration: 2h30min. (village tour excluded)

This tour includes the Palagnedra Forest Reserve, a beech and a Norway fir forest. You will see a furnace used for the production of lime. Moreover, in Palagnedra, you will visit the San Michele Church decorated with 15th Century frescoes.

300.- per tour | Max. nr. of participants: 15

3



THE ARENA RESERVE

On demand from the 1st May to the 31st October
Duration: 5h

A tour in the Arena Forest Reserve in Vergeletto Valley, which includes a typical mountain forest. This excursion will take you to Alpe Arena (1690m), offering a wonderful panorama of the valley's mountains.

350.- per tour | Max. nr. of participants: 15

5

Historic Trails

THE HISTORIC TRAILS THAT, IN THE HEART OF THE PARK, LEAD US IN THE FOOTSTEPS OF THE ONSERNONE AND CENTOVALLI FARMERS' PAST AND TOWARDS HIDDEN TREASURES ARE THREE.

HIKING BOOTS, MOUNTAIN CLOTHES AND EQUIPMENT ARE ALL YOU NEED TO TURN THE WALK ALONG THE VOSE ROAD FROM LOCO TO INTRAGNA, ALONG THE MARKET ROAD FROM CAMEDO TO INTRAGNA OR ALONG THE TRAIL FROM TEGNA TO THE CASTELLIERE ON MONTE CASTELLO, ONE OF YOUR BEST MEMORIES ABOUT THE FUTURE LOCARNESE NATIONAL PARK.

THE VOSE ROAD

Easy | Length: 6km | Altitude difference ascent: 355m | Altitude difference descent: 710m
Duration: 2-4h

This is the ancient mule track that the Onsernone farmers used to go along since the Middle Ages to the harbor of Ascona and the market in Locarno. It starts in Loco, with its Onsernone Museum, it goes through Niva and Vosa along dry stonewall terraces, and it ends in Intragna.

Info: Infopoint Onsernone Valley - 091 797 10 00
info@onsernone.ch - www.onsernone.ch

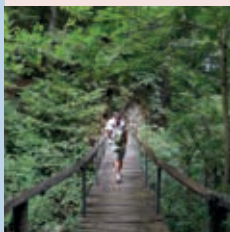


THE MARKET ROAD

Medium | Length: 11.8km | Altitude difference ascent: 625m | Altitude difference descent: 1359m
Duration: 2-4h

The Market Road overlooks the gorge of the Melezza river, following in the footsteps of the Centovalli farmers from Camedo to Borgnone, with its Mills Park. It carry on to Lionza with its Palazzo Tondi, Verdasio and Costa, from where a cable car goes to Intragna.

Info: Infopoint Centovalli & Pedemonte
091 780 75 00 - centovalli.info@bluewin.ch
www.centovalli.net



THE CASTELLIERE OF TEGNA

Easy | Length: 2.7km | Altitude difference ascent: 279m | Altitude difference descent: 279m
Duration: 2-4h

From Tegna, you get to the Castelliere's ruins on Monte Castello: a pre-Roman archeological treasure. Probably a military fortification, maybe a place of worship dedicated to Mitra.

Info: Infopoint Centovalli & Pedemonte
091 780 75 00 - centovalli.info@bluewin.ch
www.centovalli.net

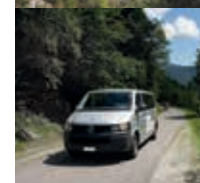
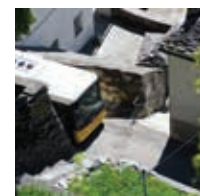


Getting around the Park

POSTBUS

Onsernone Valley (Route 324) & Rovana Valley (Route 331)

Info: PostBus Switzerland Ltd
Ticino Region - 6500 Bellinzona - 0840 852 852
ticino@autopostale.ch - www.postauto.ch



CENTOVALLINA - THE TRAIN OF THE PARK

Terre di Pedemonte & Centovalli

Info: La Biglietteria FART - Piazza stazione 3
6600 Locarno - 091 751 87 31
labiglietteria@centovalli.ch - www.centovalli.ch
Opening hours: Mo-Fr: 8.15am-12.30pm, 1.30-6.30pm; Sa: 9am-12.30pm, 1.45-4.45pm

ALP TAXI

On demand | All year-round
Info: www.parcnazionale.ch
www.taxialpino.ch

E-BIKE FOR A RIDE IN THE PARK

On hire | All year-round
Agenzia Cento Rustici
6655 Intragna - 091 780 74 40
info@centorustici.ch

Organizzazione turistica
Lago Maggiore e Valli

Desks of Ascona & Locarno;
Infopoint Vallemaggia

From the 3rd April to the 31st May (only weekend), from the 1st June to the 31st October | Opening hours: Tue-Sun: 9am-6pm
6676 Bignasco
091 760 76 76 - 079 639 03 97
infopointvm@bluewin.ch
www.infopointvm.ch

A PARK FOR EVERYONE: JOËLETTE

On hire from the 1st April to the 30th November
The joëlette helps people with disabilities to visit the Park.

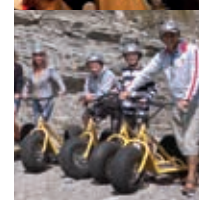
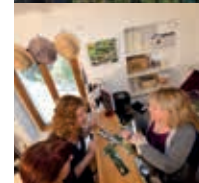
Leading & safety training (1h30min.): 200.-;
joëlette - daily rental: 50.-; electric joëlette daily rental: 75.- per vehicle | Fabio Bella
079 744 85 79 - fabiobella@bluewin.ch
Thomas Lucas - 079 822 56 34
thomas.lucas@bluewin.ch | Claudia Banfi
079 444 21 65 - claudia.banfi@bluewin.ch
PluSport guides are also available to lead people with disabilities to visit the Park



Infopoints

INFOPOINT CENTOVALLI & PEDEMONTE

From the 28th March to the 24th October
Opening hours: Mo: 9.30am-12.30pm, 2-5pm;
Tue-Sa: 9.30am-12.30pm | Piazza Municipio
6655 Intragna - 091 780 75 00
centovalli.info@bluewin.ch - www.centovalli.net



INFOPOINT RONCO S/ASCONA

From the 15th February to the 31st December
Opening hours: Mo-Fr: 8am-12pm | Via Livurcio 4
6622 Ronco s/Ascona - 091 792 33 00
turismo@ronco-s-ascona.ch
www.ronco-s-ascona.ch

INFOPOINT ONSERNONE VALLEY

From the 28th March to the 25th October
Opening hours: We-Fr: 8.30am-1pm, 2.30-6pm (if raining 5pm); Sa-Sun: 9am-1pm, 2.30-5pm
6661 Auresio - 091 797 10 00
info@onsernone.ch - www.onsernone.ch

INFOPOINT BOSCO GURIN

All year-round | Every day | Opening hours:
9-11.30am, 13.30-17.30pm - Hotel Walser
6685 Bosco Gurin - 091 759 02 02
info@hotel-boscogurin.ch
www.hotel-boscogurin.ch
Ask about renting the Monster Roller!

ORGANIZZAZIONE TURISTICA LAGO MAGGIORE E VALLI

Opening from the 23rd March to the 24th October | 0848 091 091 - info@ascona-locarno.com
www.ascona-locarno.com

Ascona Viale Papio 5
Opening hours: Mo-Fr: 9am-6pm;
Sa: 10am-6pm; Sun: 10am-2pm

Brissago Via Leoncavallo 25
Opening hours: Mo-Fr: 9am-12pm, 2-6pm;
Sa: 9am-12pm, also 2-6pm in Jul./Aug., closed in Oct.

Locarno Largo Zorzi 1
Opening hours: Mo-Fr: 9am-6pm;
Sa: 10am-6pm; Sun: 10am-1.30pm, 2.30-5pm

Locarnese National Park Project

CP 323 - 6600 Locarno
Tel 0840 840 777
info@parconazionale.ch
www.parcnazionale.ch

IMPRESSUM
Photo: Glaucio Cugini - Locarnese National Park
Project: Ticino Turismo: activities and tours' promoters
07.2015

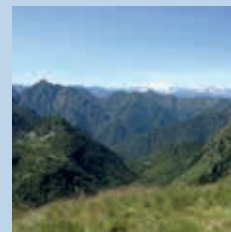
Guided trekkings, excursions and walks



Parks without borders

THE FUTURE LOCARNESE NATIONAL PARK TOGETHER WITH THE NEARBY VAL GRANDE NATIONAL PARK OFFERS MANY TREKKINGS FOR GROUPS, BETWEEN SWITZERLAND AND ITALY, WHERE NATURE HAS NO BORDERS. UP AND DOWN THE MOUNTAINS, ON ONE- OR MULTI-DAY EXCURSIONS, TO DISCOVER THE CROSS-BORDER LIFE OF THE PARKS!

Information and booking: Valgrande Società Cooperativa
0039 368 201 688 - info@coopvalgrande.it - www.coopvalgrande.it



THE VAL GRANDE NATIONAL PARK

The 6/14 & 9/14 or on demand for groups (min. 10 pers.) from the 1st May to the 30rd October
Time: 8.30am-7.30pm

An excursion with local products tasting to the Val Grande National Park in Italy, the largest wilderness area in the Alps, where you can enjoy unique views over the Eastern side of Monte Rosa and the 4000m Alp peaks.

60€ p.p. if arriving from Switzerland (train ride incl.), 42€ p.p. if arriving from Italy, incl. transportation and tasting | Min. & max. nr. of participants: 10-25 | Booking no later than 6/12 & 9/11



FROM PARK TO PARK

Saturday 8th - Sunday 9th August or on demand for groups (min. 10 pers.) from the 15th June to the 30rd September

A wonderful 2-day trekking between the Locarnese National Park Project and the Val Grande National Park in Italy, to discover the geological uniqueness that brings together Centovalli, Vigezzo Valley and Cannobina Valley. You can learn about the similarities (natural characteristics) and differences (history) between these two regions and realities.

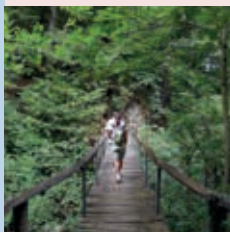
Day 1

The Locarnese National Park Project's Region:
Locarno - Camedo (by train)
L'Alpino - Montevecchio.

Day 2

The Val Grande National Park's Region:
Montevecchio - Provola - Daila
Finero - Re - Locarno (by train).

105€ p.p. if arriving from Switzerland (train ride incl.), 85€ p.p. if arriving from Italy, incl. food, accommodation and transportation
Min. & max. nr. of participants: 10-15 | Booking no later than 7/29

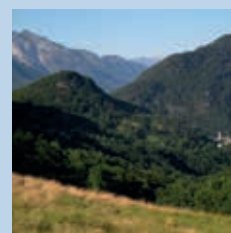


THE LOCARNESE NATIONAL PARK

The 5/23 & 10/3 or on demand for groups (min. 10 pers.) from the 1st May to the 30rd October
Time: 8.30am-7.30pm

An excursion with local products tasting to Monte Comino, between Centovalli and Onsernone Valley, rich in nature and history.

60€ p.p. if arriving from Italy (train ride incl.), 42€ p.p. if arriving from Switzerland, incl. transportation and tasting | Min. & max. nr. of participants: 10-25 | Booking no later than 5/20 & 10/1



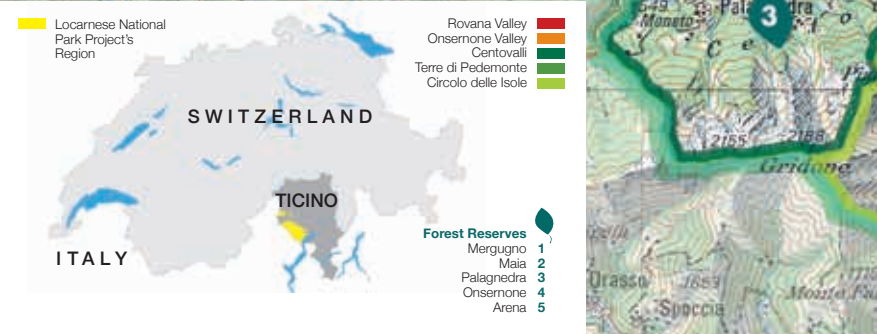


Discover the wild nature of the Locarnese National Park

By leaving the crowded Lake Maggiore shores, you get into a wild territory characterized by deep gorges, impetuous rivers and thick forests. The feeling is of going back to primordial times, when man hadn't settled in these valleys yet. Here, in the heart of Europe, stressed visitors will find themselves at a far end of the world and they will forget the noise of civilization. In the past, this region was heavily populated and the careful visitor will find the evidence of an ancient alpine civilization everywhere, hidden in the green. Expert guides and more than 400 km of trails will let you discover and explore this exceptional territory.

For more information, please visit: www.parconazionale.ch

To submit other activities and new guided tours, please write to: agenzia@parconazionale.ch



Park's Trekkings

TREKKING DEI FIORI
 Tuesday 30rd June - Saturday 4th July
The Trekking dei Fiori crosses the region of the future Locarnese National Park in 5 days, going from a subtropical to an alpine climate. Along the 35km route, you will meet the Lake Maggiore and the Brissago Islands, then touch Monte Ghiridone's summit. You will follow this trekking route towards picturesque villages in the Centovalli, scattered along the historic Market Road, and in the Onsernone Valley, stopping by the Baths of Craveggia on Italian territory. Finally, through some mountain pastures, you will reach Bosco Gurin, the only Walser village in Ticino.



Day 1: Ascona - Brissago Islands - Brissago - Capanna Al Legn.
Day 2: Capanna Al Legn - Ghiridone - Palagnedra - Lionza - Monte Comino.
Day 3: Monte Comino - Ruscada - Baths of Craveggia - Spruga (Comolengo).
Day 4: Spruga - Alpe Salei - Alpe Porcarescio.
Day 5: Alpe Porcarescio - Bosco Gurin - Ascona.

5 days/4 nights package: 750.- p.p., incl. shared accommodation, food with water and 2dl wine per meal, guide, transportations, accessory costs
 Min. & max. nr. of participants: 8-12 | Booking is required
 Locarnese National Park Project CP 323 - 6600 Locarno
 091 751 83 05
agenzia@parconazionale.ch
www.parconazionale.ch

TREKKING DELLE VALLI E DEI VILLAGGI
 Tuesday 30rd June - Friday 3rd July
 Monday 21st - Thursday 24th September
A 4- or 5-days trekking across valleys and villages of the future Locarnese National Park! From Ascona, you will go up to Corona dei Pinci and then down onto Rasa in Centovalli. Afterwards, along the Vose Road, you will reach Loco in Onsernone Valley. Then, you will carry on to Russo, Vergeletto, Alpe Salei and Alpe Porcarescio. Finally, you will return to Ascona, or you can continue to Bosco Gurin.



Day 1: Ascona - Corona dei Pinci - Rasa.
Day 2: Rasa - Intragna - Loco.
Day 3: Loco - Russo - Vergeletto.
Day 4: Vergeletto - Alpe Salei - Alpe Porcarescio - (Ascona).
Day 5 (optional): Alpe Porcarescio - Bosco Gurin - Ascona.

4 days/3 nights package: 500.- p.p., day 5: 150.- p.p., incl. shared accommodation, food with water and 2dl wine per meal, guide, transportations, accessory costs
 Min. & max. nr. of participants: 8-12 | Booking is required
 Locarnese National Park Project CP 323 - 6600 Locarno
 091 751 83 05
agenzia@parconazionale.ch
www.parconazionale.ch

Walks in the Park

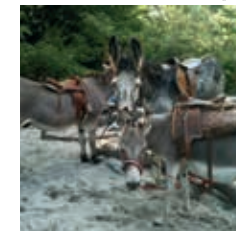
LITERARY WALKS
 On demand | All year-round | Duration: 2-6h
Through stories and literature, you have the choice to explore Ascona, Monte Verità and Balladrum or Arcegno, along with the creative personalities that have lived in these places, from Herman Hesse to the Arcegno hermit.
 2h: 170.-, 3h: 200.-, 4h: 220.-, 6h: 340.- per tour (groups of 25 or more must hire a second guide)
 Claudio Andretta - 091 751 29 20
centrocuore@yahoo.com
www.centrodelcuore.ch



TOUR OF THE THREE HILLS
 On demand from the 1st March to the 30rd November | Time: 9am-5pm
Three amazing locations of the future Locarnese National Park? The Monte Verità, known for its cultural fervor, the legendary Balladrum and the Maia Woodland, with its living nature. 3 hills, 3 settings, 3 experiences!
 Adults: 72.- p.p., children (6-16 years): 24.- p.p., groups: 340.- per tour | Min. & max. nr. of participants: 4-20 | Mark Graf - 079 480 48 68
mark.graf@na-tours.ch - www.na-tours.ch



STROLLING WITH THE DONKEYS
 On demand | All year-round | Duration: approx. 2h
A stroll along the riverbank of the Melezza, joined by the two friendly donkeys Cäsi and Tobi, and their owner Erica. Resting areas are available, where you can enjoy a snack or a refreshing plunge.
 100.- per tour | Max. nr. of participants: 4 (children > 5 years) | Erica Bänziger - 6653 Verscio
 079 354 12 30 - erica@biogans.ch
www.ericabanziger.ch



LAMA TREKKING
 On demand | Every day, all year-round
Marisa and Jean-Pierre's llamas are waiting for you in Arcegno (in winter) and on Monte Comino (in summer) to take a walk and visit the farm.
 Walk: adults: 40.- p.p., children: 35.- p.p.; Other activities: to be arranged | Min. & max. nr. of participants: to be arranged | Jean-Pierre Bäschlin
 079 240 13 09 - g.baeschlin@bluewin.ch
www.lamatrekkingticino.ch

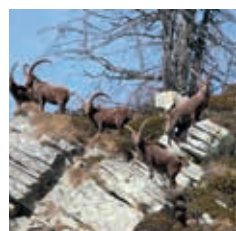


Excursion to the Lake of Salei

EXCURSION TO THE LAKE OF SALEI
 On demand from the 15th June to the 30rd September | Time: 8.30am-4.15pm
With an expert guide, you will follow a circular trail among beech, fir and larch forests, which from Comolengo goes up to the alpine lake of Salei, surrounded by pastures and rhododendrons.
 50.- p.p. | Min. & max. nr. of participants: 6-8
 Gabriella Berger - 079 448 80 55
gabriella.berger@bluewin.ch



FOLLOWING THE IBEXES
 On demand from the 1st May to the 31st October
A 1- or 2-days circular trail of in Vergeletto Valley, in the footsteps of the ibex colony that live in the Rosso di Ribia! You will go up to Alpe Ribia and the Uomo Tondo and then carry on to Alpe Doia and Camana Valley among mires, small lakes and beautiful panoramas.
 1-day tour: 55.- p.p., 2-days tour: 160.- p.p. (incl. accommodation, dinner and breakfast) | Min. & max. nr. of participants, 1-day tour: 4-15, 2-days tour: 4-10 | Maruska Lucchini - 079 476 51 48
maruskalucchini@hotmail.com



ON THE WALSER'S FRONTIERS
 On demand from the 1st June to the 30rd September
This 4-day trekking is a natural as well as cultural tour, in the tracks of the ancient Walser, between history and gastronomy. Setting off from Binn, you will cross the Binntal Nature Park and enter the Alpe Veglia and Devero Nature Park, crossing the Arbola pass. You will descend into the Formazza Valley, reaching the village of Bosco Gurin, the only Walser settlement in Ticino, through the Guriner Furka.



Binn - Binntal Nature Park
 Alpe Veglia and Devero Nature Park
 Formazza Valley - Bosco Gurin.

380.- p.p.; 60.- suppl. single room, incl. food, accommodation and transportation | Min. & max. nr. of participants: 8-12 | Fabio Bella - 079 744 85 79
coglianatura@bluewin.ch - www.fabiobella.ch

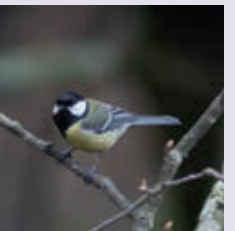
The School in the Forest

THE SCHOOL IN THE FOREST IN ARCEGNO IS A WOOD HOUSE IN THE MAIA WOODLAND, WHERE EACH YEAR AN ACTIVITY-RICH PROGRAM IS OFFERED TO ADULTS AND CHILDREN, MOSTLY ON SATURDAY AFTERNOON.
 Check out the program here: www.scuolabosco.altervista.org | Associazione Amici della Scuola nel Bosco - 6618 Arcegno - 077 432 11 81
scuolaboscoarcegno@gmail.com



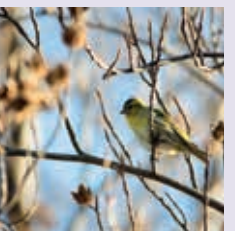
Birdwatching

200, ROUNDED DOWN: THIS IS THE NUMBER OF BIRD SPECIES THAT CAN BE SPOTTED THROUGHOUT THE 12 MONTHS IN THE FUTURE LOCARNESE NATIONAL PARK! THIS COMES FROM THE GREAT DIVERSITY OF HABITATS FOUND BETWEEN THE 195M OF LAKE MAGGIORE AND THE 2850M OF PIZZO BIELA: FROM THE YELLOW-LEGGED GULLS OF THE BRISSAGO ISLANDS, TO THE TITS AND THE BLACK WOODPECKERS OF THE FORESTS AND TO THE PARTRIDGES OF THE ROSSO DI RIBIA. TWO ORNITHOLOGICAL WALKS WILL BE OFFERED AT THE BEGINNING OF 2016, ONE IN THE MAIA WOODLAND AND ONE ALONG THE MAGGIA RIVERBANKS IN ASCONA.
 Information and booking:
 Alessio Martinoli - 079 338 15 49 - alessio.martinoli@gmail.com



THE SOUND OF SPRING
 On demand from the 19th March to the 24th April 2016 | Time: 7.30-11.30am
With the start of the warm season, the forests in the future Park resound with the bird songs: the spring hymn. You will learn to recognize the most common birds in Arcegno, from the great tit's two notes to the black-cap's warble.
 25.- p.p. | Min. & max. nr. of participants: 10-15
 Booking 2 weeks before

JOIN THE MIGRANTS' JOURNEY
 On demand from the 26th March to the 24th April 2016 | Time: 7.30-11.30am
The Ascona Plain is an ideal rest stop for migrating birds to regain precious energy while flying north for more than 5000km. An up-close stroll with the protagonists of one of the most extraordinary natural phenomena!
 25.- p.p. | Min. & max. nr. of participants: 10-15
 Booking 2 weeks before



Agenda of the Park 2015

SA 30.05
Open Doors at Monte Verità and educational activities offered by the Park - Ascona with the Monte Verità Foundation

FR 19.06
Parks Market - Bern with the Swiss Parks Network

SU 21.06
Summer Solstice Party
 Monadello - with Amici dello Strafuloo

SU 05.07
Let's climb the Park all together: from Brissago to Gresso by bike and e-bike - with the Municipality of Gresso, the Associazione Cramalina and the Salite del VCO

SU 12.07
The National Park Candidates on a platter: an exclusive "Ticino Experience - The movie that can be eaten" at EXPO2015
 Milan - with the Canton Ticino and Ticino Experience

SA 18.07
Fireworks
 Brissago - with the Municipality of Brissago

SA 01.08
Opening of the Baths of Craveggia renovated thanks to the interreg project "Frontiera di acqua e pace", excursion and polenta - Baths of Craveggia and Comolengo - with the Municipality of Onsernone, the Municipality of Craveggia, the Patriziato di Comolengo and the Amici di Comolengo

SU 02.08
Concert of the festival "Musica in quota" - Monte Comino - with Pro Comino and the Associazione Musica in quota

SA 15.08
Verge-lento: the Slow Mobility Event - Vergeletto Valley - with the Municipality of Vergeletto, the Squadra di Vergeletto, the Associazione Cramalina and the Sci Club Onsernone

SU 30.08
Opening of the Playground for everybody
 Parsifal, Monte Verità - with the Municipality and the Patriziato of Ascona, the Associazione Manifestazioni Ascona and the schools of Ascona, Brissago and Ronco s/Ascona.

SU 13.09
Mills Party / Bread & Wine
 Loco and Intragna - with Onsernone Museum and Centovalli and Pedemonte Museum

SA 19.09
Matzufamm and market of local products and handicrafts
 Bosco Gurin with the Museum Walserhaus

SU 11.10
TreTerre in Autumn - Terre di Pedemonte - with the Municipality of Terre di Pedemonte and local associations

The guided tours' dates and the Agenda of the Park are constantly updated, also for 2016, on the website:

www.parconazionale.ch

